

PRODUCT FOLDER



STOPPING



TURNING



LOCKING



THE STL-SYSTEM

A "MULTI-FUNCTION" UNIT ALL CONTAINED IN ONE CUSTOMER INTERFACE

THE STL-SYSTEM OFFERS YOU ONE OR SEVERAL OF THREE FUNCTIONS

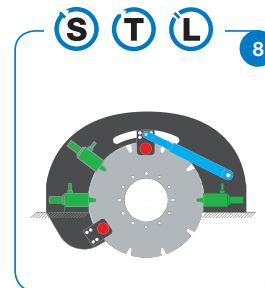
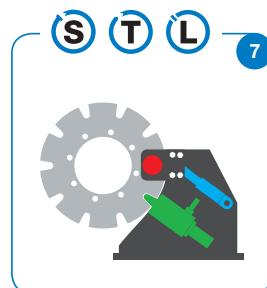
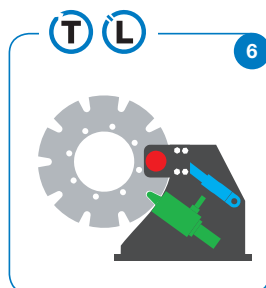
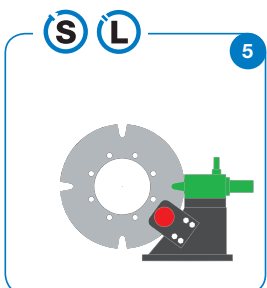
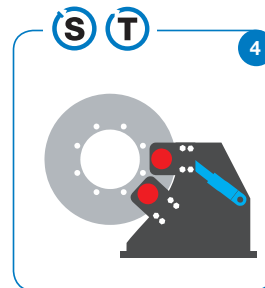
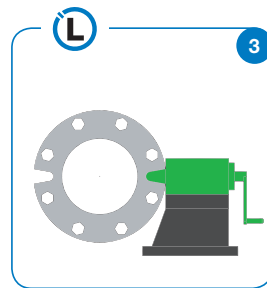
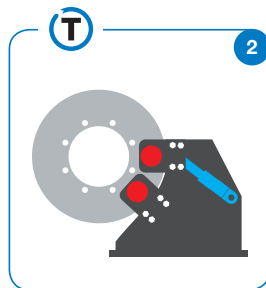
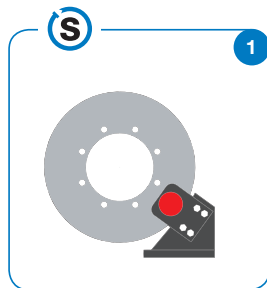
Stopping: Dellner Brakes' hydraulic or electric disc brake calipers effectively handle the stopping operation.

Turning: Mechanical linkages with hydraulic cylinders or electric motors positions the disc brakes. Together with an intelligent control system we turn or index the shaft – without the need for other turning devices. Available in two options - step by step indexing and continuous turning.

Locking: The locking device LM has a specially designed tapered pawl that is engaged into a machined slot on the outer peripheral of the brake disc. This mechanically locks the shaft in place. The LM-device can be operated manually, hydraulically or electrically.

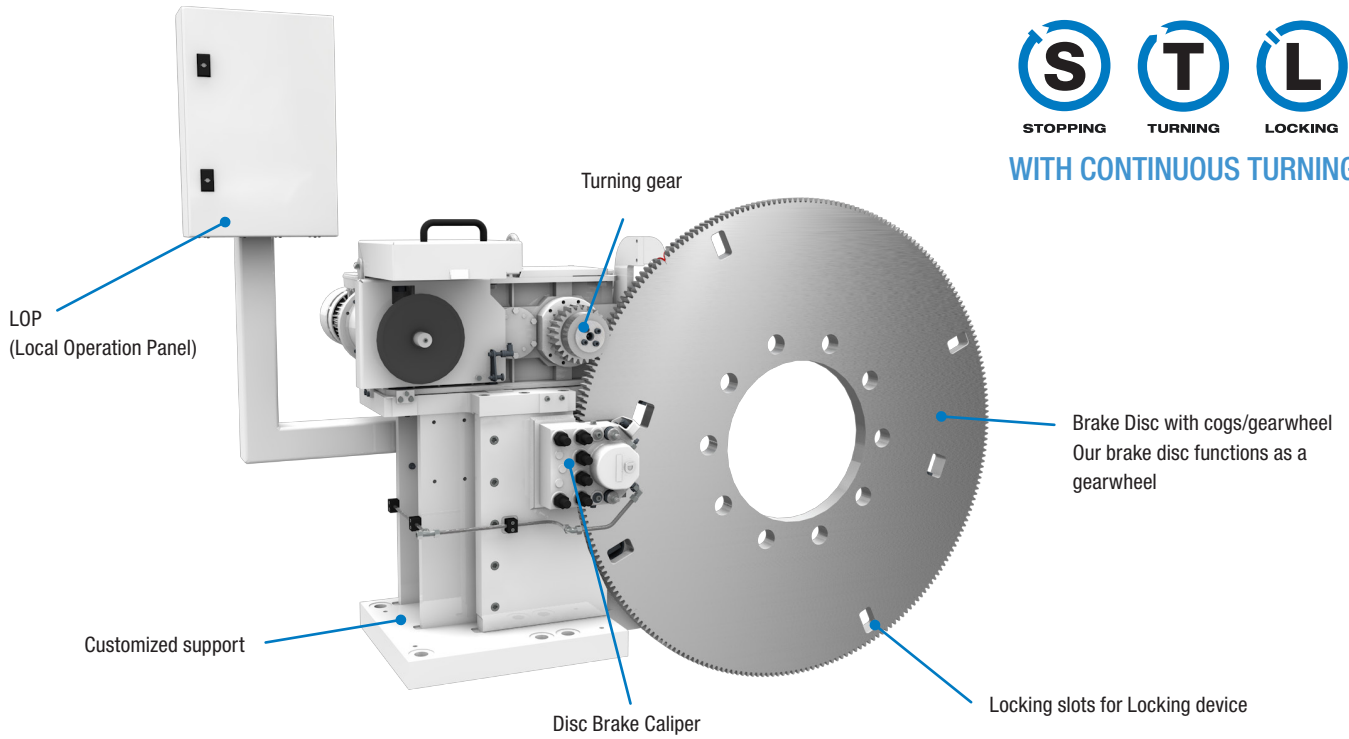
The **STL-modular system** is indeed a modular system so you can choose the function(s) needed. All from single S, T or L functions, combined dual functions in terms of SL, ST or TL to a complete STL system can be selected.

STL CONFIGURATION EXAMPLES

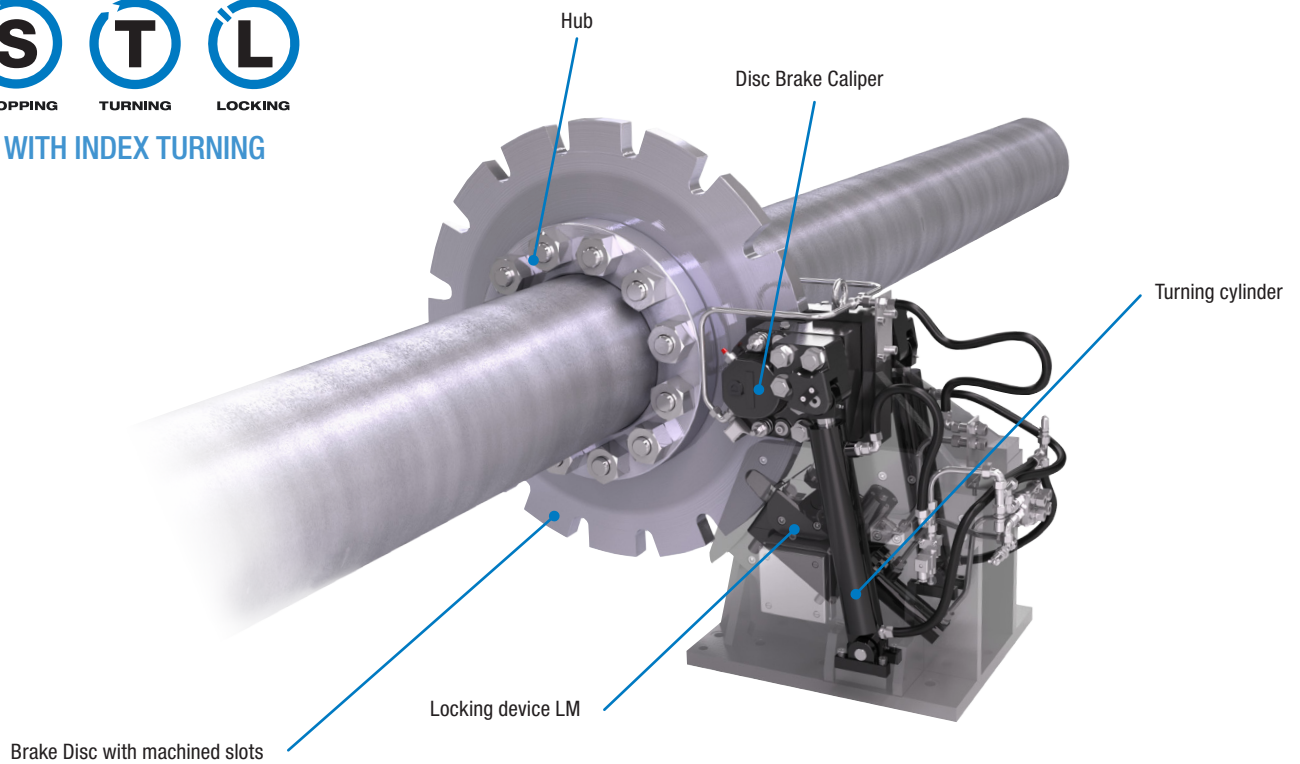




WITH CONTINUOUS TURNING



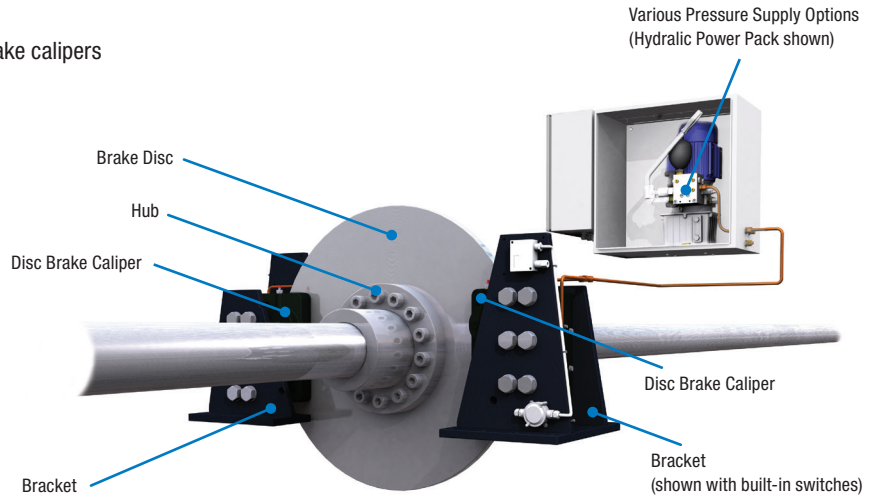
WITH INDEX TURNING



BRAKING SOLUTIONS

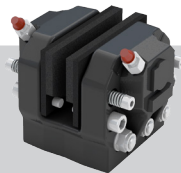
Scope of supply

- Pressure applied, spring released disc brake calipers for stopping and/or holding applications, alternatively spring applied, hydraulic or electric released disc brakes for emergency and parking braking applications.
- Brake discs and hubs.
- Standard or customised mounting brackets.
- Various pressure supply options, see page 7.

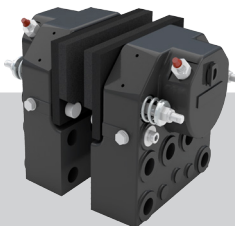


DISC BRAKES

HYDRAULIC PRESSURE APPLIED – SPRING RELEASED



SKD 35, SKD 50, SKD 65 & SKD 80
Braking force 8 000-41 400 N



SKD 90 & SKD 100
Braking force 104 600-129 200 N



SKD 4 x 100
Braking force 258 800 N

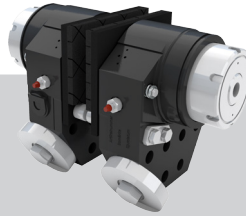


SKD 4 x 125
Braking force 404 200 N

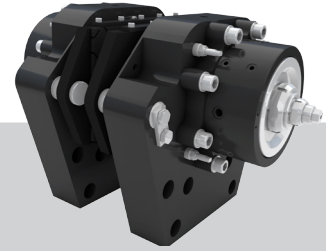
SPRING APPLIED – HYDRAULIC PRESSURE RELEASED



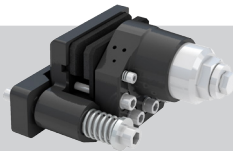
SKP 50 & SKP 95
Braking force 2700-33500 N



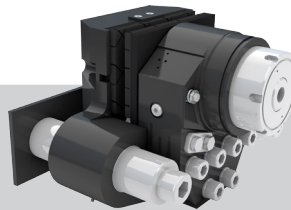
SKP 140
Braking force 26300-117600 N



SKP 220
Braking force 98700-298000 N



SKP 65 SA
Braking force 2000-18200 N



SKP 140 SA
Braking force 26300-117600 N



SKP 220 SA
Braking force 98700-294400 N

SPRING APPLIED – HYDRAULIC PRESSURE RELEASED, WITH SUPPORT AND HYDRAULIC POWER PACK



COMPACT 50, 95 & 140
Braking force 2700-113600 N

ELECTRIC BRAKES ELECTRO MECHANIC OR SPRING APPLIED



Electric brakes available in electro mechanical applied (spring released) version as well as spring applied version - contact us for more information.

LOCKING DEVICES

The Dellner Brakes locking devices (LM) have a specially designed tapered pawl that is engaged into a machined slot on the outer peripheral of a brake disc or a shaft flange. The LM devices are equipped with proximity switches for ON/OFF detection.

The LM devices are fail safe and can be used to mechanically lock a shaft which allows for safe maintenance procedures to be conducted on or around the entire shaft line arrangement.

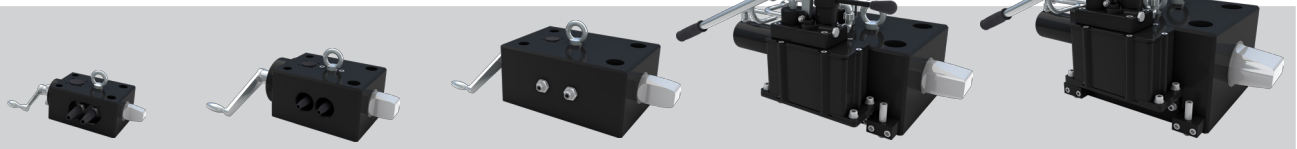
Examples of applications

- Propulsion Shaft lines
- Grinding, Rod & Ball Mills etc.
- Conveyors
- Wind Mills
- Dredgers

Advantages

- The Dellner Brakes locking devices (LM-series) are compact, tested and delivered as one unit with one mounting interface.
- If only a holding function of the shaftline is required, a locking device will be more cost effective and compact when compared to a holding brake solution.
- The Dellner LM-series will achieve a higher locking torque compared to a holding brake solution, as these will involve a friction coefficient depending on which material is used for holding.

MANUAL OPERATED



LM 20
Locking force 125 kN

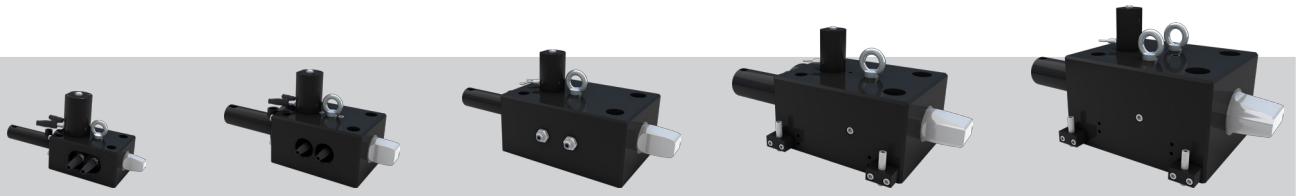
LM 40
Locking force 250 kN

LM 50
Locking force 500 kN

LM 70
Locking force 750 kN

LM 95
Locking force 1 000 kN

HYDRAULIC OPERATED



LM 20
Locking force 125 kN

LM 40
Locking force 250 kN

LM 50
Locking force 500 kN

LM 70
Locking force 750 kN

LM 95
Locking force 1 000 kN

LM devices also available in an electric operated version - contact us for more information.



PRESSURE SUPPLY

HYDRAULIC POWER PACK

The Dellner Hydraulic Power Pack series DH 2000 are available in six different models, each with several different options.

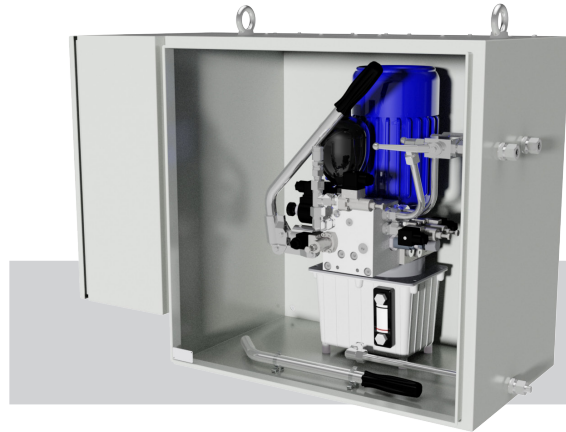
All six models can be delivered with optional enclosed hydraulic cabinets and electrical terminal boxes. The electrical terminal boxes has optional quick connectors, fireproof cables and/or operator interface.

The main functions of the different models are as follows:

DH 2100: Unit with “ON/OFF function”. Options are accumulator and pressure switch.

DH 2200: Unit with “Separate function” available as an option to make it possible to pressurise two braking systems individually and independently. Other options are accumulator, hand pump and pressure switches.

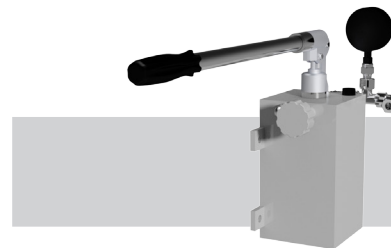
DH 2300: Unit with proportional valve in order to achieve a controlled braking operation (pressure controlled) by programming desired braking curve, controlled by an optional PLC in an electrical terminal box. Other options are accumulator, hand pump and pressure switch.



DH 2400: Unit with “Double control valves” for critical applications such as overhead cranes, etc. Other options are accumulator, hand pump, pressure switches and additional filter unit.

DH 2500: Unit with needle valve in order to achieve a controlled braking operation (flow controlled). Other options are accumulator, hand pump and pressure switch.

DH 2600: Unit with accumulator and needle valve in order to achieve a controlled braking operation (fail safe flow controlled). Other options are hand pump and pressure switch.



COMPACTUS

The Compactus is a pneumatically operated hydraulic pump system that multiples pneumatic line pressure into hydraulic pressure that is sufficient to operate pressure applied disc brakes at rated capacity. The intensification ratio is 1:44.

The Compactus is supplied with the pump in an enclosed cabinet that also contains air handling equipment (shut off valve, pressure restriction safety valve and pressure regulator with filter and gauge). The Compactus is supplied with a Terminal box which can be delivered with optional quick connectors, fireproof cables and operator interface (lamps and push buttons). There are several Compactus options available, for example optional Control valve(s) that makes it possible to control different brakes individually and pressure switch(es)/transducer(s) that could indicate brake status (ON/OFF).

HAND PUMP

The Hand Pump is a device used for simple manual activation of the Dellner Disc Brake calipers. It can also be used as a back up system to the primary pressure supply system.

Different Hand Pump Systems also available (pump and several available options such as pressure gauge, accumulator pressure switch/transducer - everything assembled on a plate with internal piping) - contact us for more information.

On request we also design and supply customized pressure supply units.

SALES OFFICES

Benelux / Europe

Mijndert Geesink

Phone +31 (0) 6 516 272 57

E-mail mijndert.geesink@dellner-brakes.com

North & South America

Glenn Scott

Phone +1 (401) 515 4657

Cell +1 (401) 556 6658

E-mail glenn.scott@dellner-brakes.com

China

Tan Li

Phone +86 (21) 6442 2182

Cell +86 150 2141 5813

E-mail tan.li@dellner-brakes.com

Scandinavia / Europe

Jaakko Miekkala

Cell +358 404 191 019

E-mail jaakko.miekkala@dellner-brakes.com

Global

Roger Axelsson

Phone +46 23-78 30 54

Cell +46 70-746 52 24

E-mail roger.axelsson@dellner-brakes.com

Nordic Region

Head office

Phone +46 23-78 30 50

Fax +46 23-77 06 90

E-mail info@dellner-brakes.com



Head Office

Dellner Brakes AB
Vikavägen 144
SE-791 95 Falun
SWEDEN

US Office

Dellner Industrial Inc.
8334-H Arrowridge Blvd.
Charlotte, N.C. 28273
USA