

FOR DISPLAY UNTIL 2M²
BRUSHLESS MOTORISATION
INTENSIVE USING

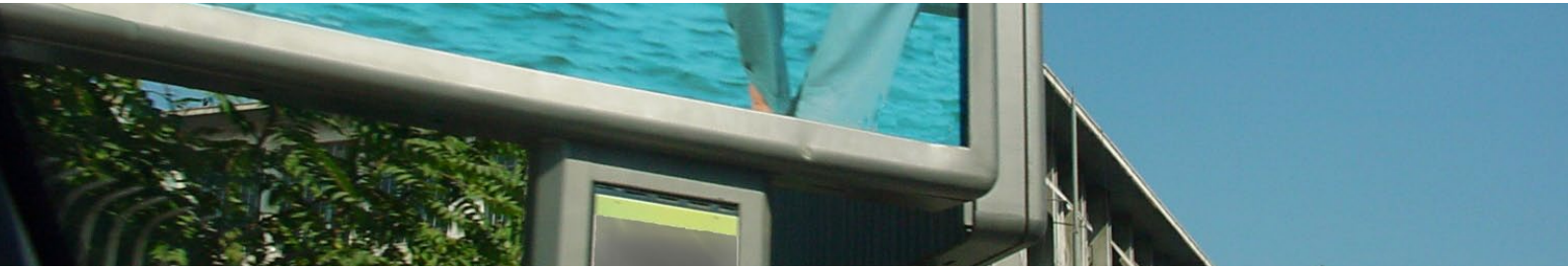
TECHNICAL FEATURES :

- Brushless direct current motor
- Zinc-plated steel cylindrical tube
- Supply voltage 24VDC
- Thermal cut-out 104°C
- Insulation class E(120°) VDE 0530
- IPX5 Protection
- S3 service class
- Working temperature : -40°C to +85°C

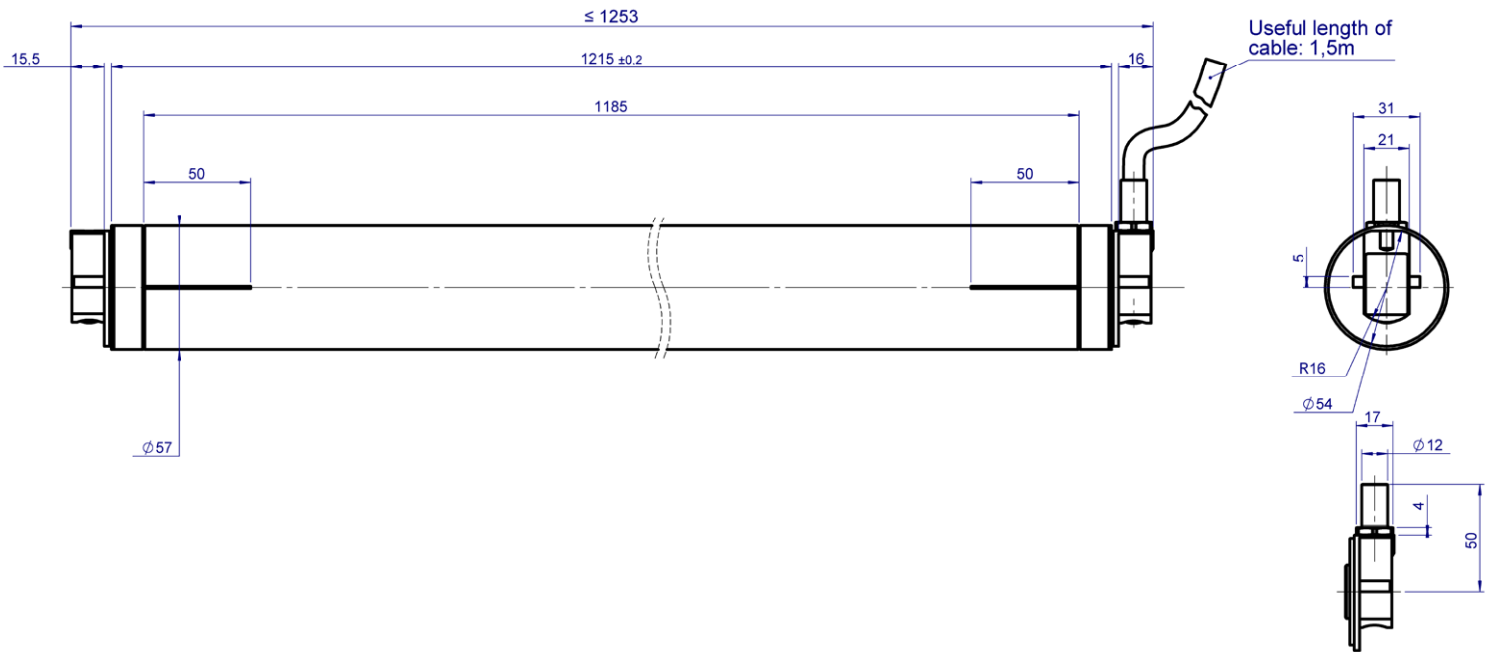

COMPLY WITH STANDARDS :

- EN 60335-1
- EN 60034-1

Ø57mm	Nominal power consumption (W)	Power rating (W)	Nominal current (A)	Starting current (A)	Nominal motor rotation (RPM)	Ratio	Nominal torque (Nm)	Starting torque (Nm)	Nominal speed (RPM)	Tube length (mm)	Weight (kg)
Reference											
Brushless motors 24V - 50Hz											
RL 057	50	29,8	2,1	8,4	3640	1/9,25	0,7	2,5	394	1185	4,6



DIMENSIONS



ELECTRICAL WIRING

