

**FOR DISPLAY UNTIL 2M<sup>2</sup>**  
**ASYNCHRONOUS MOTORISATION**  
**INTENSIVE USING**

**TECHNICAL FEATURES :**

- Asynchronous motor
- Zinc-plated steel cylindrical tube
- Permanently lubricated
- Lifespan : 10 000 hours
- Thermal cut-out 155°C
- Class F insulation
- IP44 protection
- S3 service class
- Three phase version (BT4)
- 2m cable in standard
- Working temperature : -20°C to +85°C

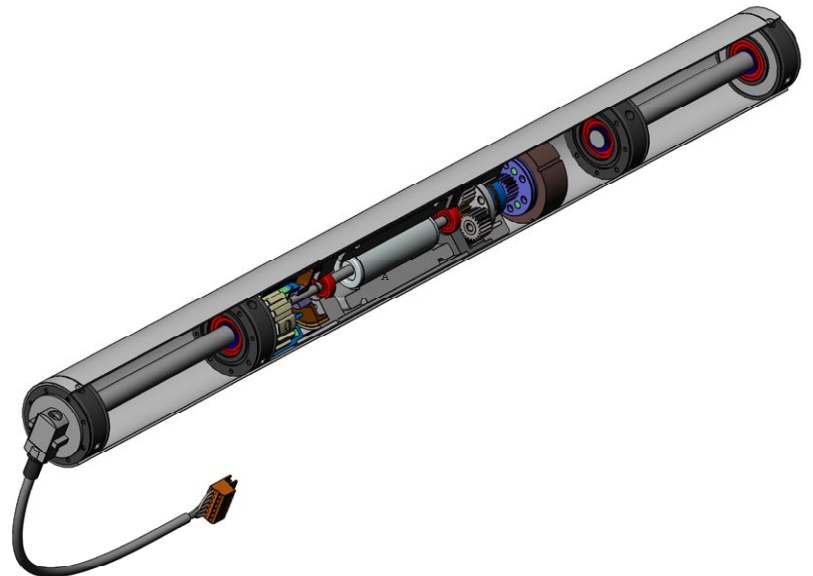


**OPTIONS AVAILABLE ON DEMANDE :**

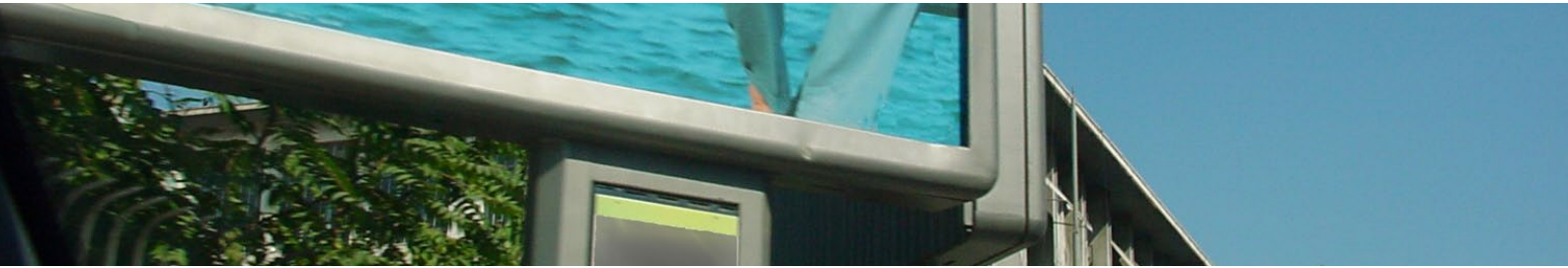
- Cable length
- Connector
- End caps
- Voltages and frequencies

**COMPLY WITH STANDARDS :**

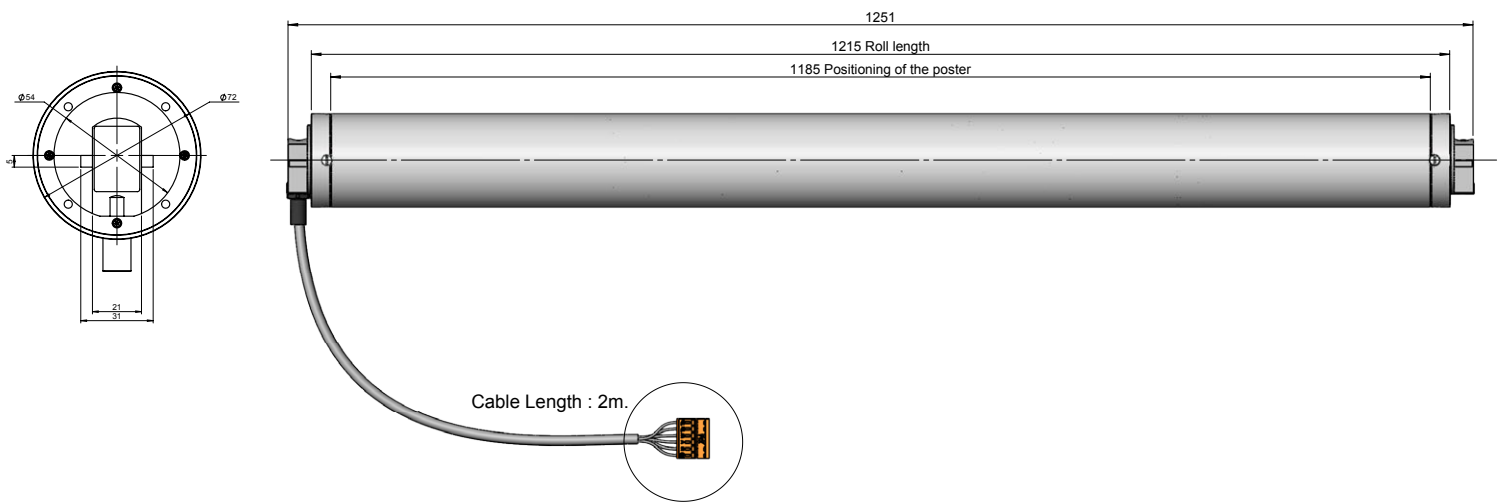
- EN 60335-1
- EN 60034-1



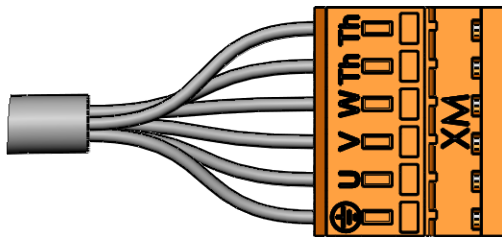
Ø72mm Reference	Motor type	Absorbed power (W)	Used power (W)	Nominal current (A)	Starting current (A)	Motor speed (RPM)	Cos φ	Ratio	Nominal torque (Nm)	Starting torque (Nm)	Output speed (RPM)	Scrolling display (m/min)
Single phase asynchronous motors 230V - 50Hz												
RL 072	BT4	90	30	0,35	0,7	1300	0,65	1/6,25	0,24	0,43	217	49



## DIMENSIONS



## ELECTRICAL WIRING



Connector 6 poles Weidmueller type SLF 5.08/06/180	
Purple	Protecteur thermique
Purple/white	
Red	W
Brown	V
Grey	U
G/Y + shield	Ground