



HIGH INDUSTRY VERSION : STEEL GEARBOX, ALUMINIUM FLANGES
MAXIMUM LOAD UNTIL 137 KG
3 TYPES OF MOTORIZATION : STANDARD, COLD, REINFORCED
SINGLE AND THREE PHASE MOTORS

TECHNICAL FEATURES :

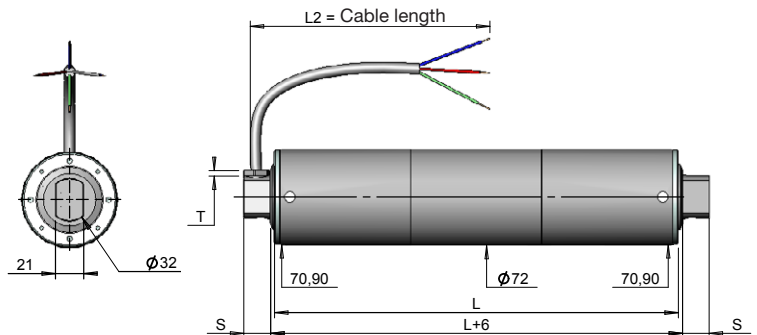
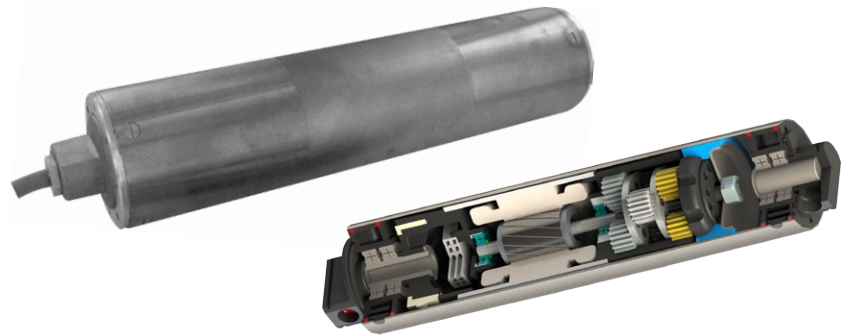
- Asynchronous motor
- Permanently lubricated
- Thermal cut-out
- Aluminium end fitting
- Steel tube
- Working with frequency convertor from 0 to 75HZ under 230V only
- Class F insulation
- IP66 protection
- S3 or S1 service class
- Working temperature : -10°C to +40°C

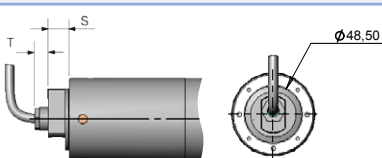
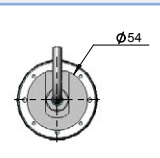
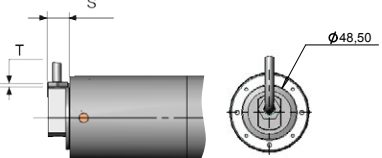
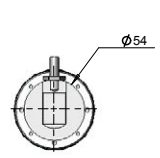
OPTIONS AVAILABLE ON DEMAND :

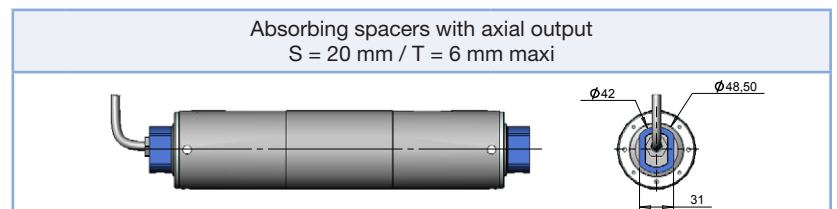
- Stainless steel or zinc plated tube
- Specific coating
- Geometry of tube : cylindric, biconic, bi-tapered
- Drum length
- Cable length
- Voltages and frequencies on request
- Brake
- Specific connectors and end fittings
- Absorbing spacers

COMPLY WITH STANDARDS :

- EN 60335-1
- EN 60034-1



	Aluminium end fittings S = 20 mm / T = 6 mm maxi	Plastic end fittings (in option) S = 15 mm T = 6 mm maxi
Axial output		
Radial output		
S: End fitting width T: Nut width + Tightening looseness		





Ø and Type	Output power (W)	Linear speed		Gearbox ratio	Torque (Nm)	Maximum load (kg)	Tractive effort (N)	Available tube length (mm)	Service class*	Intensity Capacitor (µF)	Intensity and Voltage							
		m/s	m/min								Single phase	Three phase						
Ø72 STANDARD VERSION	Motors 25 W / 230V - 50Hz								Single phase	Three phase								
	20W	0,04	2,6	1/216	17,7	114	491	de 250 à 1000	S3 Intermittent	50% on a 6 seconds cycle maximum	0,23A 2 µF (CM2 type)	0,31A under 230V						
		0,06	3,7	1/152	12,5	81	347											
		0,07	4,2	1/135	11,1	71	307											
		0,09	5,3	1/107	8,8	57	245											
		0,10	6,0	1/95	7,8	50	217											
		0,11	6,7	1/84	6,9	45	192											
		0,12	7,4	1/76	6,2	40	173											
		0,14	8,4	1/67	5,5	36	153											
		0,16	9,4	1/60	4,9	31	135											
		0,18	10,7	1/53	4,3	28	120											
		0,26	15,7	1/36	3,1	20	86											
		0,37	22,6	1/25	2,2	14	61											
		0,52	31,4	1/18	1,6	11	45											
		0,59	35,3	1/16	1,5	9	40											
	0,67	40,4	1/14	1,3	8	35												
	Motors 35 W / 230V - 50Hz								Single phase	Three phase								
	35W	0,09	5,5	1/107	12,3	80	343	300 350 400 450 500 600 800 1000	S1 continued	50% on a 6 seconds cycle maximum	0,35A 2 µF (BM2 type)	0,45A under 230V						
		0,10	6,2	1/95	10,9	71	303											
		0,11	7,0	1/84	9,7	62	269											
		0,12	7,7	1/76	8,7	56	242											
		0,14	8,8	1/67	7,7	50	214											
		0,16	9,8	1/60	6,8	44	190											
		0,18	11,1	1/53	6,0	39	168											
		0,26	16,3	1/36	4,3	28	121											
		0,37	23,5	1/25	3,1	20	85											
		0,52	32,7	1/18	2,3	15	64											
		0,59	36,8	1/16	2,0	13	56											
		0,67	42,0	1/14	1,8	11	49											
		Motors 50 W / 230V - 50Hz										Single phase	Three phase					
		50W	0,09	5,3	1/107	17,6	114					490	300 350 400 450 500 600 800 1000	S3 Intermittent	50% on a 6 seconds cycle maximum	0,4A 3 µF (BM2 type)	0,45A under 230V	
	0,10		6,0	1/95	15,6	101	433											
	0,11		6,7	1/84	13,8	89	384											
	0,12		7,4	1/76	12,4	80	346											
	0,14		8,4	1/67	11,0	71	306											
	0,16		9,4	1/60	9,8	63	271											
0,17	10,7		1/53	8,6	56	240												
0,26	15,7		1/36	6,2	40	172												
0,37	22,6		1/25	4,4	28	122												
0,52	31,4		1/18	3,3	21	91												
0,59	35,3		1/16	2,9	19	81												
0,67	40,4		1/14	2,5	16	71												
Ø72 COLD VERSION	Motors 30 W / 230V - 50Hz								Single phase	Three phase								
	30W		0,09	5,3	1/107	10,6	68	294	300 350 400 450 500 600 800 1000	S1 continued	50% on a 6 seconds cycle maximum	0,26A 2 µF (BT2 type)					0,26A under 230V	
		0,10	6,0	1/95	9,4	60	260											
		0,11	6,7	1/84	8,3	54	230											
		0,12	7,4	1/76	7,5	48	207											
		0,14	8,4	1/67	6,6	43	184											
		0,16	9,4	1/60	5,9	38	163											
		0,18	10,7	1/53	5,2	33	144											
		0,26	15,7	1/36	3,7	24	103											
		0,37	22,6	1/25	2,6	17	73											
		0,52	31,4	1/18	2,0	13	54											
		0,59	35,3	1/16	1,7	11	48											
		0,67	40,4	1/14	1,5	10	42											
		Ø72 REINFORCED VERSION	Motors 70 W / 230V - 50Hz										Single phase	Three phase				
70W			0,11	6,7	1/84	19,3	125	537					300 350 400 450 500 600 800 1000	S3 Intermittent	50% on a 6 seconds cycle maximum	0,6A 6 µF (BM2 type)	0,55A type 230V (BT2 type)	
	0,12		7,4	1/76	17,4	112	484											
	0,14		8,4	1/67	15,4	100	428											
	0,16		9,5	1/60	13,7	88	379											
	0,18		10,7	1/53	12,1	78	336											
	0,26		15,7	1/36	8,3	53	229											
	0,37		22,3	1/25	5,8	38	162											
	0,52		31,4	1/18	4,1	27	115											
	0,59		35,3	1/16	3,7	24	102											
	0,67		40,4	1/14	3,2	21	89											
	Motors 80 W / 230V - 50Hz								Single phase	Three phase								
	80W		0,14	8,4	1/67	17,6	102	439	300 350 400 450 500 600 800 1000	S3 Intermittent	50% on a 6 seconds cycle maximum	0,6A 6 µF (BM2 type)					0,55A type 230V (BT2 type)	
			0,16	9,7	1/60	15,7	91	393										
		0,18	10,7	1/53	13,9	81	347											
0,26		15,7	1/36	9,4	55	236												
0,38		22,6	1/25	6,5	38	164												
0,52		31,4	1/18	4,7	27	118												
0,59		35,3	1/16	4,2	24	105												
0,67		40,4	1/14	3,7	21	92												

* Reduce the load of 50% if the drum motor is used in service class S1 instead of S3

STANDARD VERSION

Drum motors are particularly well adapted for the belt conveyors :

- Steel planetary gear
- Belt always centered thanks to a specific machining

COLD VERSION

- Allows a continued service class S1
- The drum motor does not warm the belt in contact
- Is recommended for high temperature environments
- Is recommended for the conveying of temperature sensitive products (food industry, ...)
- Is compulsory if the tube has got a coating

REINFORCED VERSION

Increase of the available power and torque for the conveying of loads

- S3 service class of 50% on a 6 seconds cycle

The indicated values are given for a 2 meters long conveyor.
The indicated values are given for a 2 meters long conveyor. Without LOAD