



# SIREM

Innovation driver



Designed  
and made in  
FRANCE



## Display motorised drums catalog



# Motorized drum for Display by SIREM



The unwinding of many posters in the same advertising street furniture allows to show a great number of sides. The available advertising spaces in town being limited, the unwinding of many posters on the same street furniture increases the potential of the operating location.

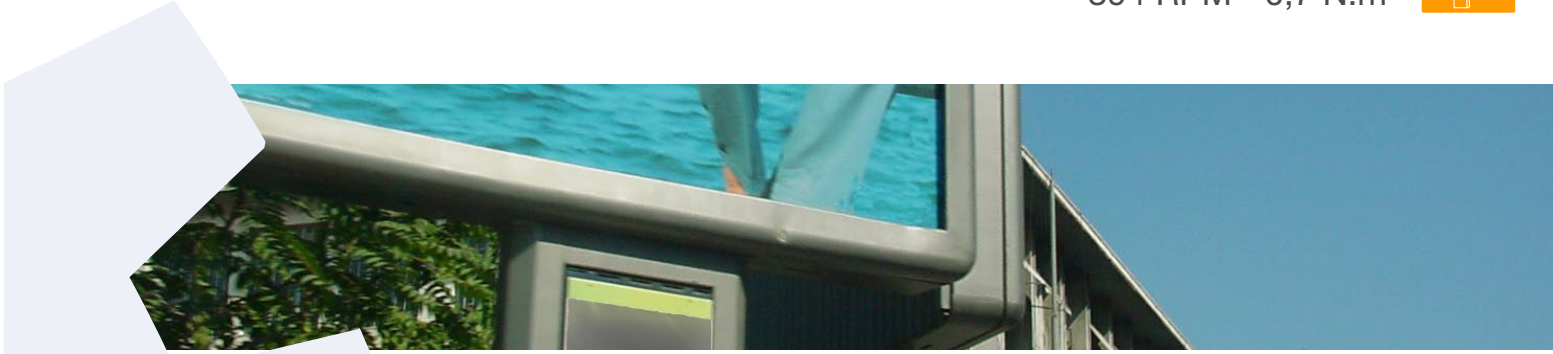
The use of tubular motorizations: motor-driven rollers, reduces the space requirement of the device and operates at the same time both sides of the street furniture.

These motorizations have to be highly resistant, operating day and night, winter as summer, in a glassed-in space, with ongoing on/off cycles at short intervals of display.

The performances of SIREM motor-driven rollers together with an electronic unit of control must achieve an accurate and smooth display of the sides.

## Choose your motorization

	DISPLAY DIMENSIONS	
	 2m <sup>2</sup>	 12m <sup>2</sup>
Drum Ø57 mm	X	
Drum Ø72 mm	X	
Drum Ø115 mm		X



**FOR DISPLAY UNTIL 2M<sup>2</sup>**  
**BRUSHLESS MOTORISATION**  
**INTENSIVE USING**

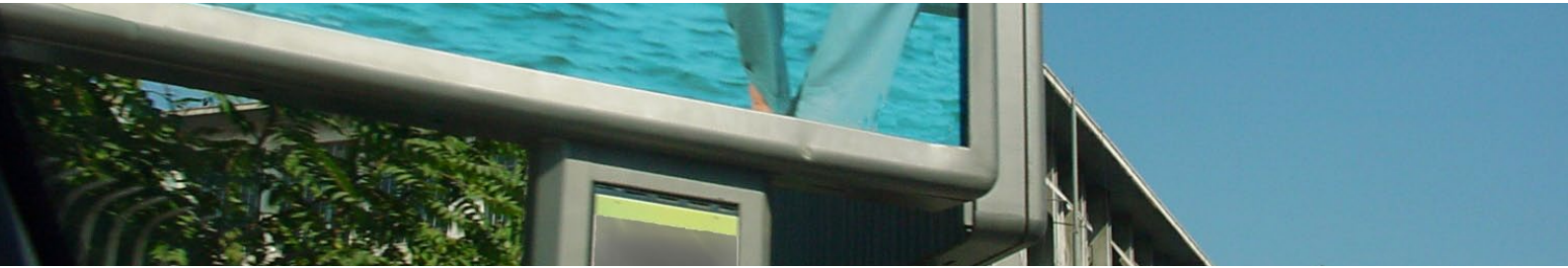
**TECHNICAL FEATURES :**

- Brushless direct current motor
- Zinc-plated steel cylindrical tube
- Supply voltage 24VDC
- Thermal cut-out 104°C
- Insulation class E(120°) VDE 0530
- IPX5 Protection
- **S3** service class
- Working temperature : -40°C to +85°C

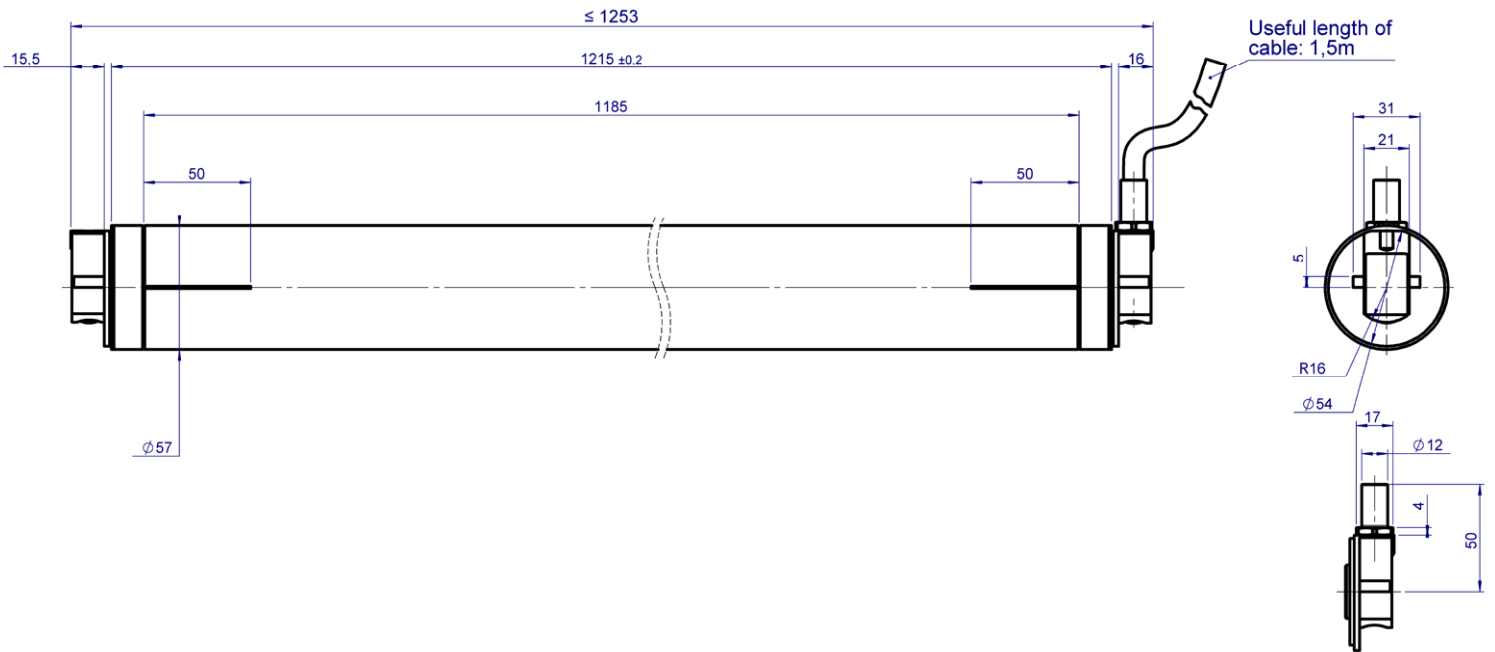

**COMPLY WITH STANDARDS :**

- EN 60335-1
- EN 60034-1

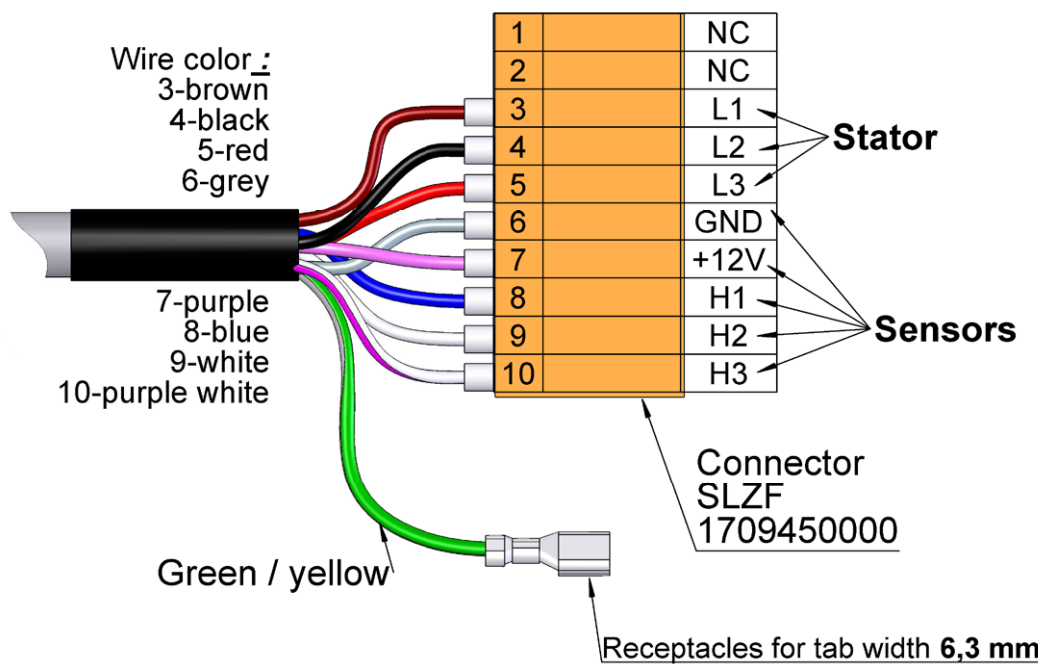
Ø57mm	Nominal power consumption (W)	Power rating (W)	Nominal current (A)	Starting current (A)	Nominal motor rotation (RPM)	Ratio	Nominal torque (Nm)	Starting torque (Nm)	Nominal speed (RPM)	Tube length (mm)	Weight (kg)
Reference											
<b>Brushless motors 24V - 50Hz</b>											
RL 057	50	29,8	2,1	8,4	3640	1/9,25	0,7	2,5	394	1185	4,6



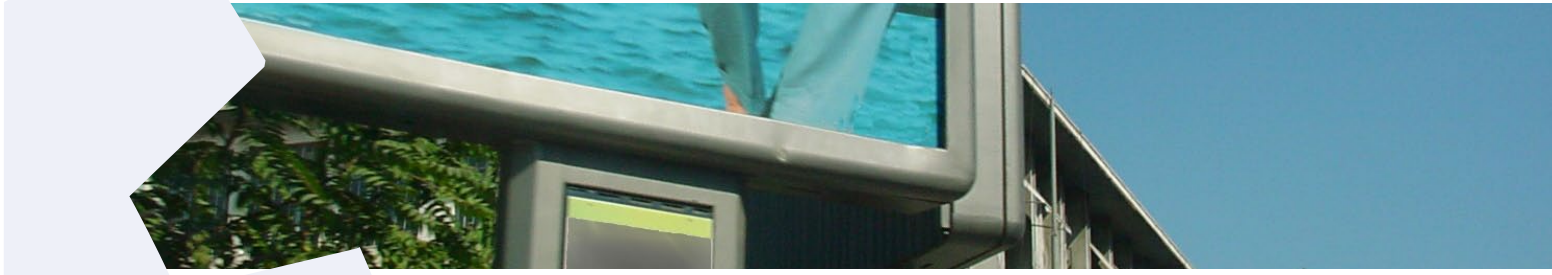
## DIMENSIONS



## ELECTRICAL WIRING







**FOR DISPLAY UNTIL 2M<sup>2</sup>**  
**ASYNCHRONOUS MOTORISATION**  
**INTENSIVE USING**

**TECHNICAL FEATURES :**

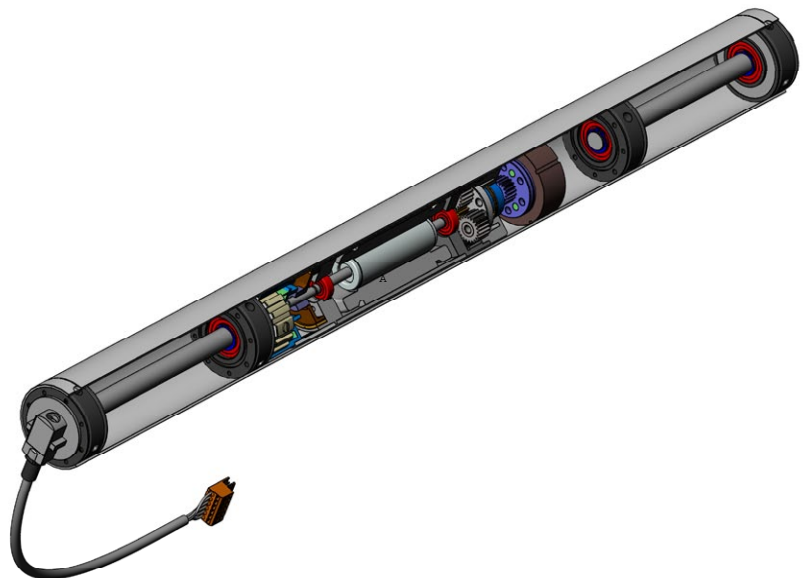
- Asynchronous motor
- Zinc-plated steel cylindrical tube
- Permanently lubricated
- Lifespan : 10 000 hours
- Thermal cut-out 155°C
- Class F insulation
- IP44 protection
- S3 service class
- Three phase version (BT4)
- 2m cable in standard
- Working temperature : -20°C to +85°C


**OPTIONS AVAILABLE ON DEMANDE :**

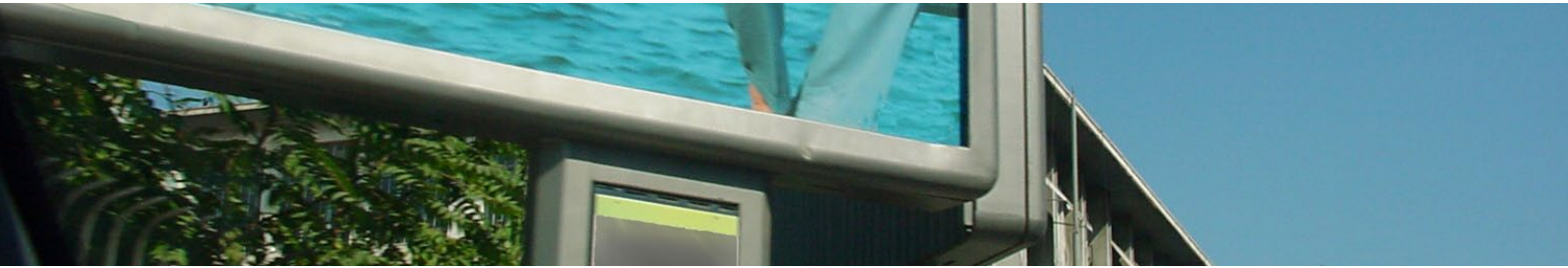
- Cable length
- Connector
- End caps
- Voltages and frequencies

**COMPLY WITH STANDARDS :**

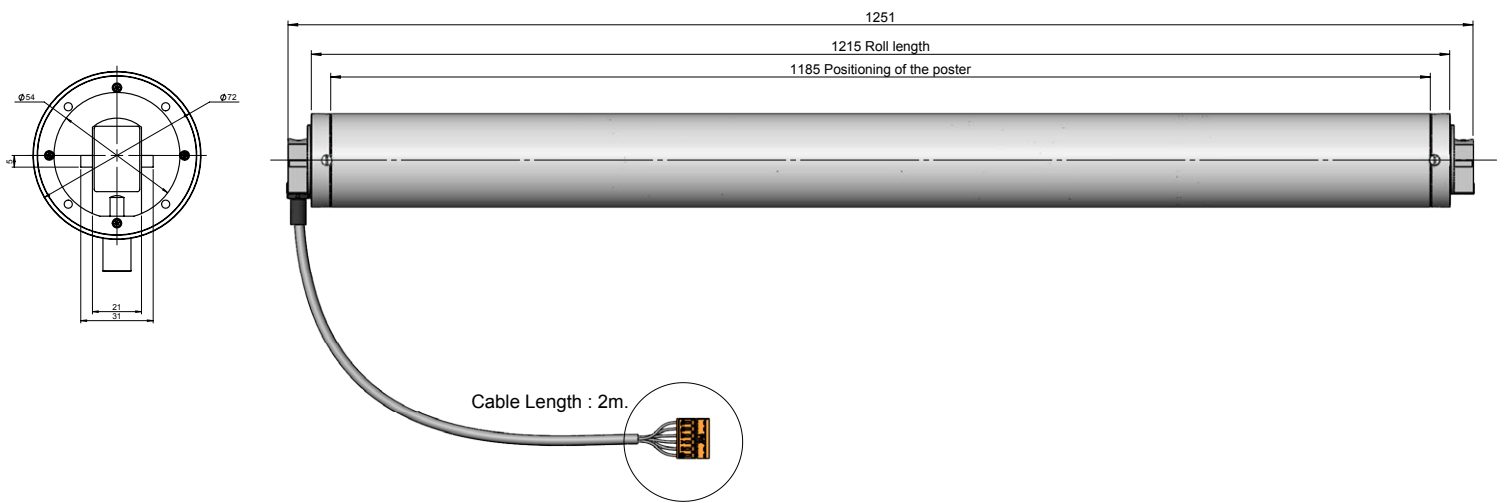
- EN 60335-1
- EN 60034-1



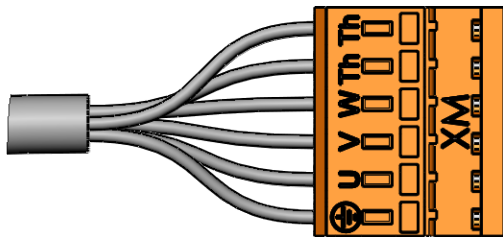
Ø72mm Reference	Motor type	Absorbed power (W)	Used power (W)	Nominal current (A)	Starting current (A)	Motor speed (RPM)	Cos φ	Ratio	Nominal torque (Nm)	Starting torque (Nm)	Output speed (RPM)	Scrolling display (m/min)
Single phase asynchronous motors 230V - 50Hz												
RL 072	BT4	90	30	0,35	0,7	1300	0,65	1/6,25	0,24	0,43	217	49



## DIMENSIONS



## ELECTRICAL WIRING



Connector 6 poles Weidmueller type SLF 5.08/06/180	
Purple	Protecteur thermique
Purple/white	
Red	W
Brown	V
Grey	U
G/Y + shield	Ground



**FOR DISPLAY UNTIL 12M<sup>2</sup>  
ASYNCHRONOUS MOTOR  
INTENSIVE USING**

**TECHNICAL FEATURES :**

- 2 three phase asynchronous motors 4 poles 230Vac
- Steel cylindrical tube
- Power 200W
- Speed : 1200 RPM
- Electronic speed variator to drive the motors (5 to 15hz)
- Stop position is maintained by a power failure brake
- Permanently lubricated
- Lifespan : 10 000 hours
- Thermal cut-out 155°C
- Class F insulation
- IP44 protection
- S3 service class
- Three phase version (FT4)
- Working temperature : -20°C to +85°C

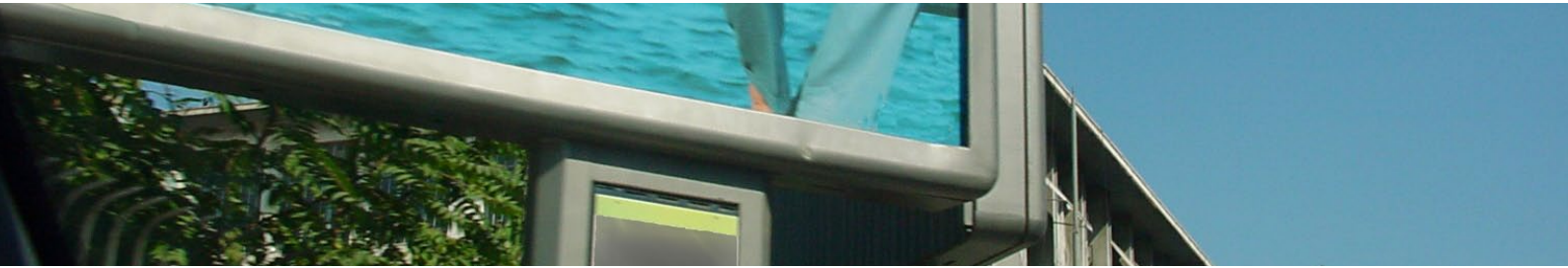
**OPTIONS AVAILABLE ON DEMAND :**

- Tube length
- Cable length
- Connector
- End caps
- Voltages and frequencies

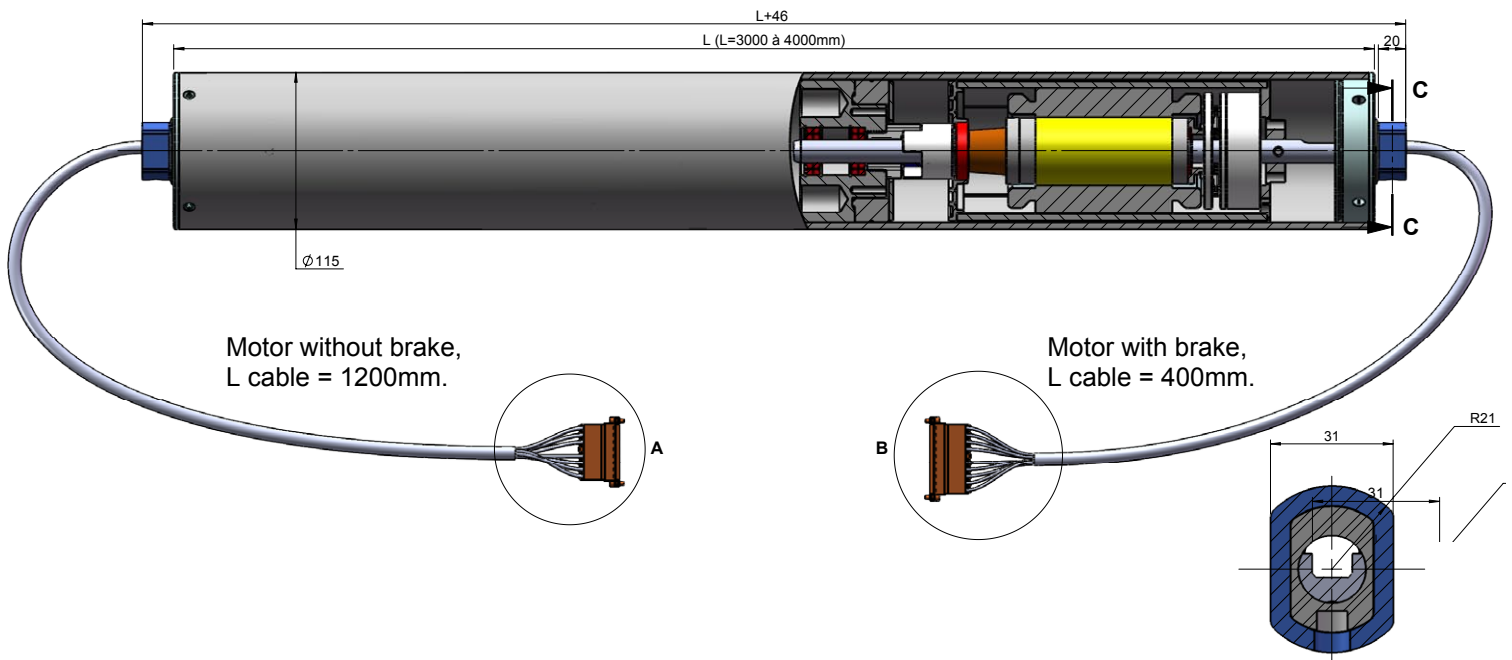
**COMPLY WITH STANDARDS :**

- EN 60335-1
- EN 60034-1

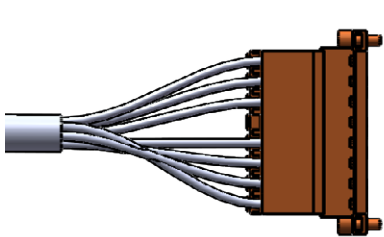




## DIMENSIONS

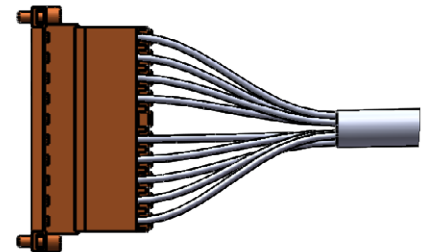


## ELECTRICAL WIRING



Connector Weidmueller 8 poles SLZF 5.08/8/180B OR	
Purple	Protecteur thermique
Purple	Protecteur thermique
Drain int.	Continuité du blindage
N/A	
Brown	U
Black	V
Blue	W
G/Y + drain ext	Ground + shield

Connector Weidmueller 10 poles SLZF 5.08/10/180B OR	
G/Y + drain ext	Ground + shield
Blue	U
Black	V
Brown	W
N/A	
Drain intérieur	
Purple	Thermal protector
Purple	
Red	Brake 24Vdc
Gris	






**Your application :**

- Scrolling billboard
- Checkout
- Belt conveyors
- Others

Describe your application : \_\_\_\_\_  
 \_\_\_\_\_  
 \_\_\_\_\_

**Characteristic of the conveyor :**

- Length of the belt (in mm) : \_\_\_\_\_
- Width of the belt (in mm) : \_\_\_\_\_
- Masse à tracter (in kg) : \_\_\_\_\_
- Belt speed (in m/s) : \_\_\_\_\_
- Usage    Continuous
- Intermittent  - Stipulate : \_\_\_\_\_

**Environment**

- Specific standard
- Name the standards : \_\_\_\_\_
- Specific constraints
- Stipulate the constraints : \_\_\_\_\_
- Protection index IP : \_\_\_\_\_
- Temperatures : Mini (°C) : \_\_\_\_\_
- Maxi (°C) : \_\_\_\_\_
- Dusty
- Damp

**Tube :**

- Tube length (in mm) : \_\_\_\_\_
- Tube diameter (in mm) :
- Ø57                       Ø89
- Ø72                       Ø110
- Ø80                       Ø115

**Geometry :**

- Bi-tapered  Cylindrical
- Bi-conic  Indifferent

**Tube finish :**

- Zinc plated  Aluminium
- Non galvanized steel  Indifférent
- Stainless steel
- Specific coating

Stipulate : \_\_\_\_\_

**Power supply :**

- Single phase  24 volts DC  50 Hz
- Three phase  110 volts  60 Hz
- 230 volts
- 380 volts
- Frequency inverter

**Connector**

- Axiale output
- Radial output
- Specific connector
- Stipulate : \_\_\_\_\_
- Cable length (in mm) : \_\_\_\_\_

**End fitting**

- Plastic  Aluminium
- Space dampers
- None

**Quantities :** \_\_\_\_\_ **pieces**

**Complementary informations :** \_\_\_\_\_  
 \_\_\_\_\_  
 \_\_\_\_\_



Chemin du Pilon - 01700 Saint Maurice de Beynost - FRANCE  
Tél. +33 (0)4 78 55 83 00 - Fax. +33(0)4 78 55 53 19  
[www.sirem.fr](http://www.sirem.fr) - [info@sirem.fr](mailto:info@sirem.fr)